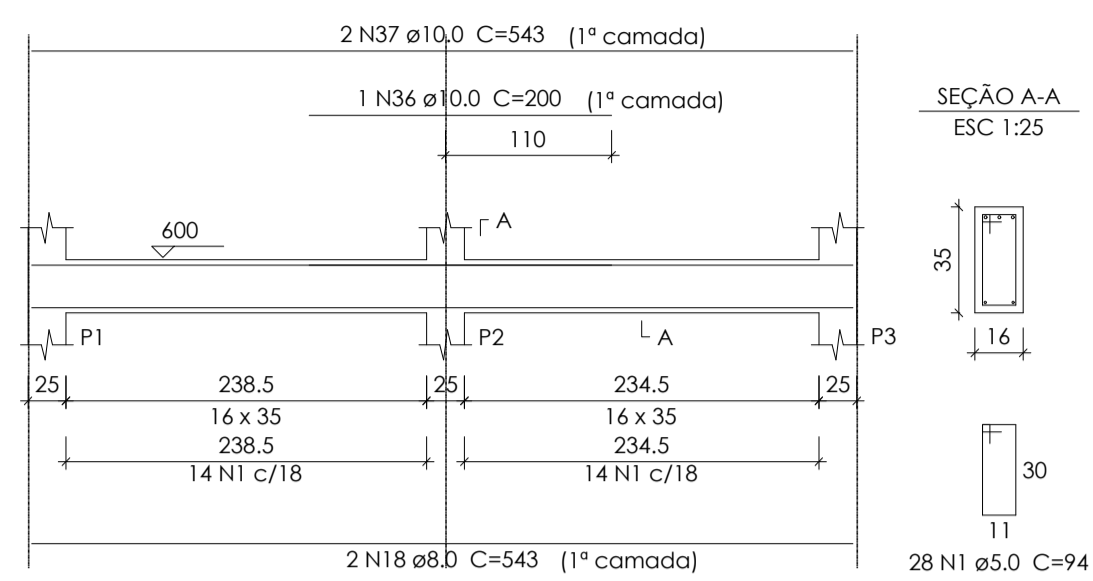
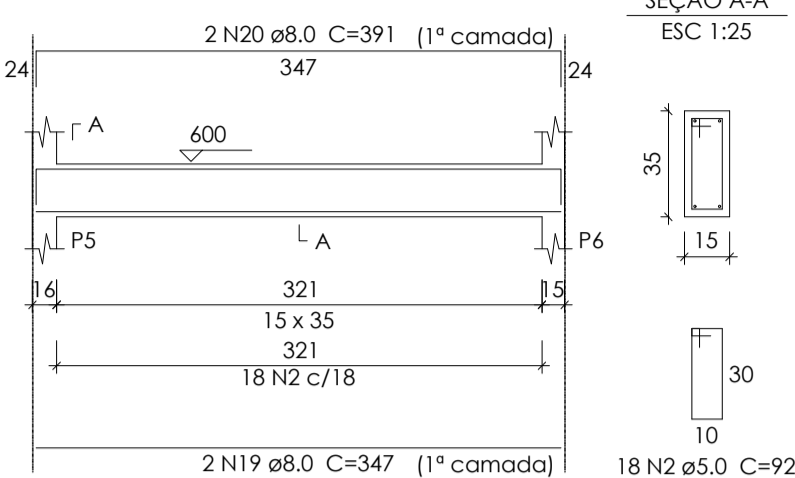


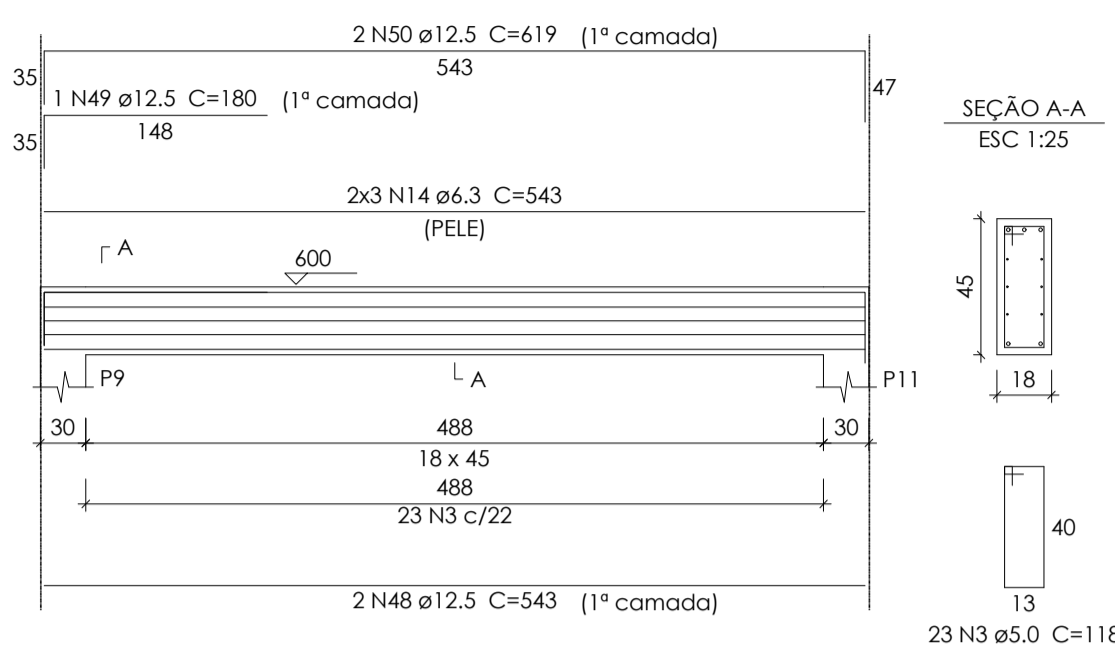
V1
ESC 1:50



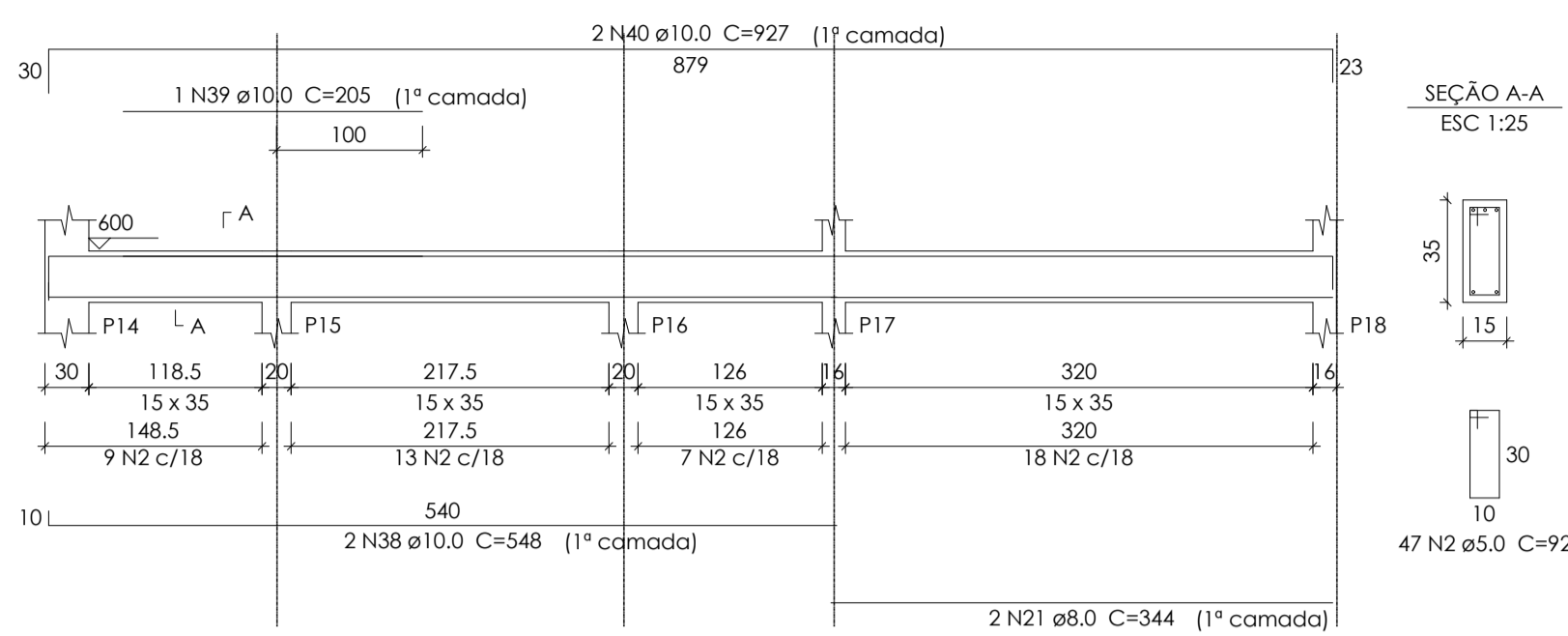
V2
ESC 1:50



V3
ESC 1:50



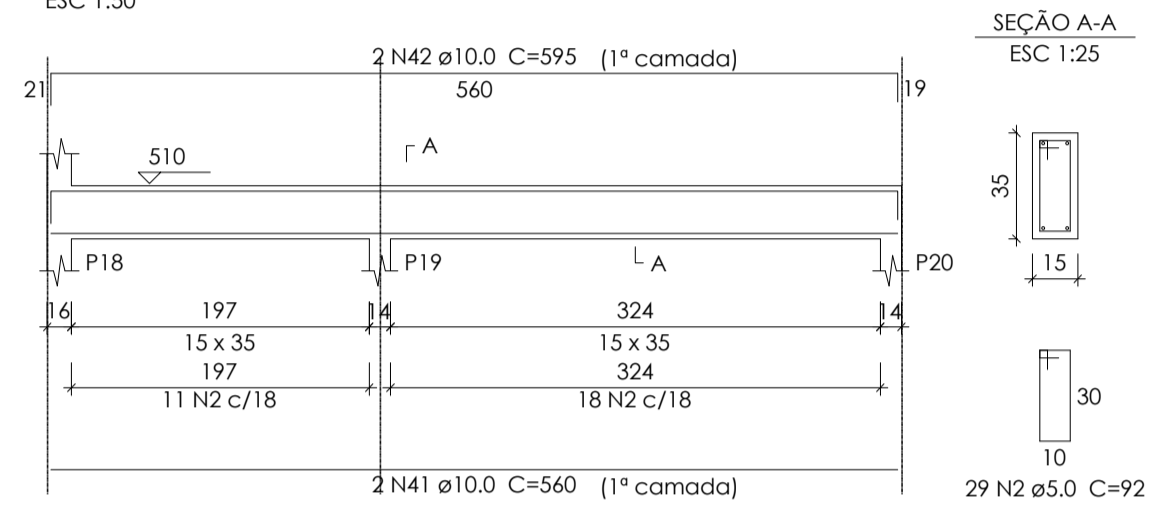
V4
ESC 1:50



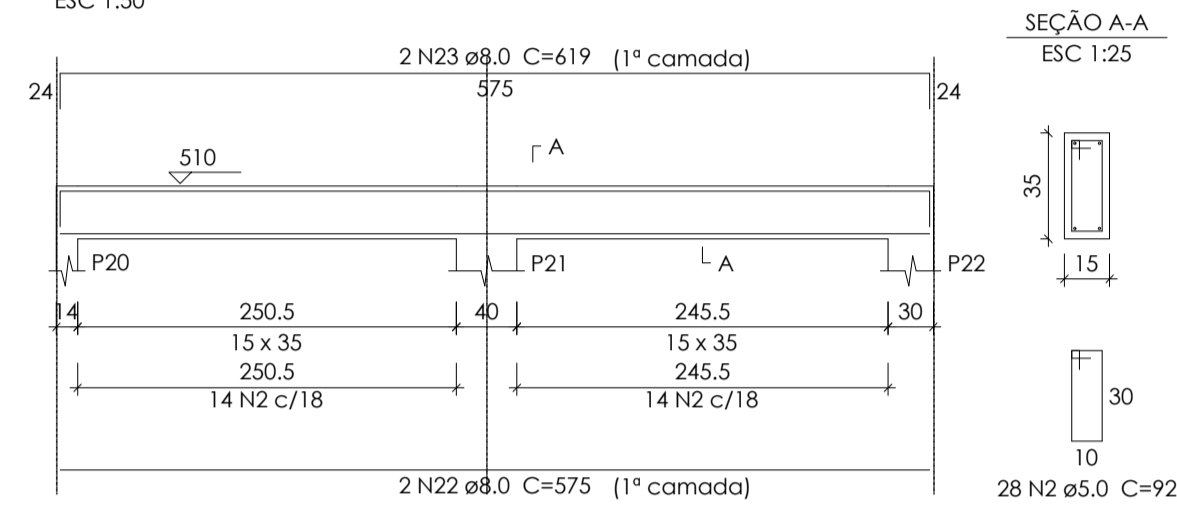
Relação do aço

CAÇO	N	DIAM	Q	UNIT (cm)	C.TOTAL (cm)
CA60	1	5.0	28	94	2632
	2	5.0	165	92	15180
	3	5.0	23	118	2714
	4	5.0	25	114	2850
	5	5.0	4	108	432
	6	5.0	29	128	3712
	7	5.0	4	80	320
	8	5.0	12	112	1344
	9	5.0	42	102	4284
	10	5.0	4	100	400
	11	5.0	44	112	4928
	12	5.0	3	88	264
	13	5.0	49	90	4410
CA50	14	6.3	18	543	9774
	15	6.3	6	239	1434
	16	6.3	4	769	3076
	17	6.3	6	1064	6384
	18	8.0	2	543	1086
	19	8.0	2	347	694
	20	8.0	2	391	782
	21	8.0	2	344	688
	22	8.0	2	575	1150
	23	8.0	2	619	1238
	24	8.0	2	355	710
	25	8.0	1	120	120
	26	8.0	2	382	764
	27	8.0	2	777	1554
	28	8.0	2	227	454
	29	8.0	2	268	536
	30	8.0	1	165	165
	31	8.0	2	1072	2144
	32	8.0	2	940	1880
	33	8.0	2	980	1960
	34	8.0	2	254	508
	35	8.0	2	290	580
	36	10.0	1	200	200
	37	10.0	2	543	1086
	38	10.0	2	548	1096
	39	10.0	1	205	205
	40	10.0	2	927	1854
	41	10.0	2	560	1120
	42	10.0	2	595	1190
	43	10.0	4	551	2204
	44	10.0	4	106	424
	45	10.0	2	247	494
	46	10.0	4	96	384
	47	10.0	1	115	115
	48	12.5	2	543	1086
	49	12.5	1	180	180
	50	12.5	2	619	1238
	51	12.5	1	265	265
	52	12.5	1	401	401
	53	12.5	2	597	1194
	54	12.5	12	109	1308
	55	12.5	2	250	500
	56	12.5	1	378	378
	57	12.5	1	386	386
	58	12.5	2	615	1230
	59	12.5	1	159	159
	60	12.5	2	300	600
	61	12.5	1	332	332
	62	12.5	2	811	1622
	63	12.5	2	1116	2232

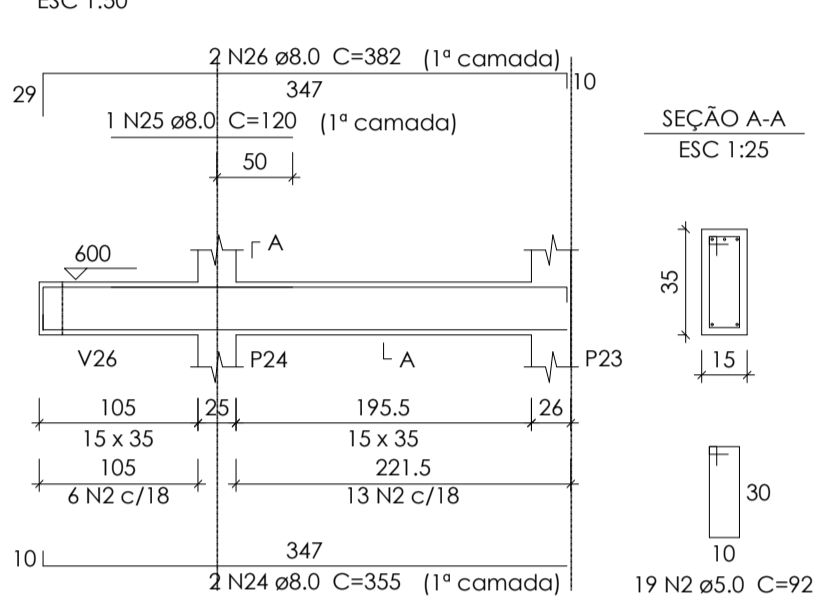
V5
ESC 1:50



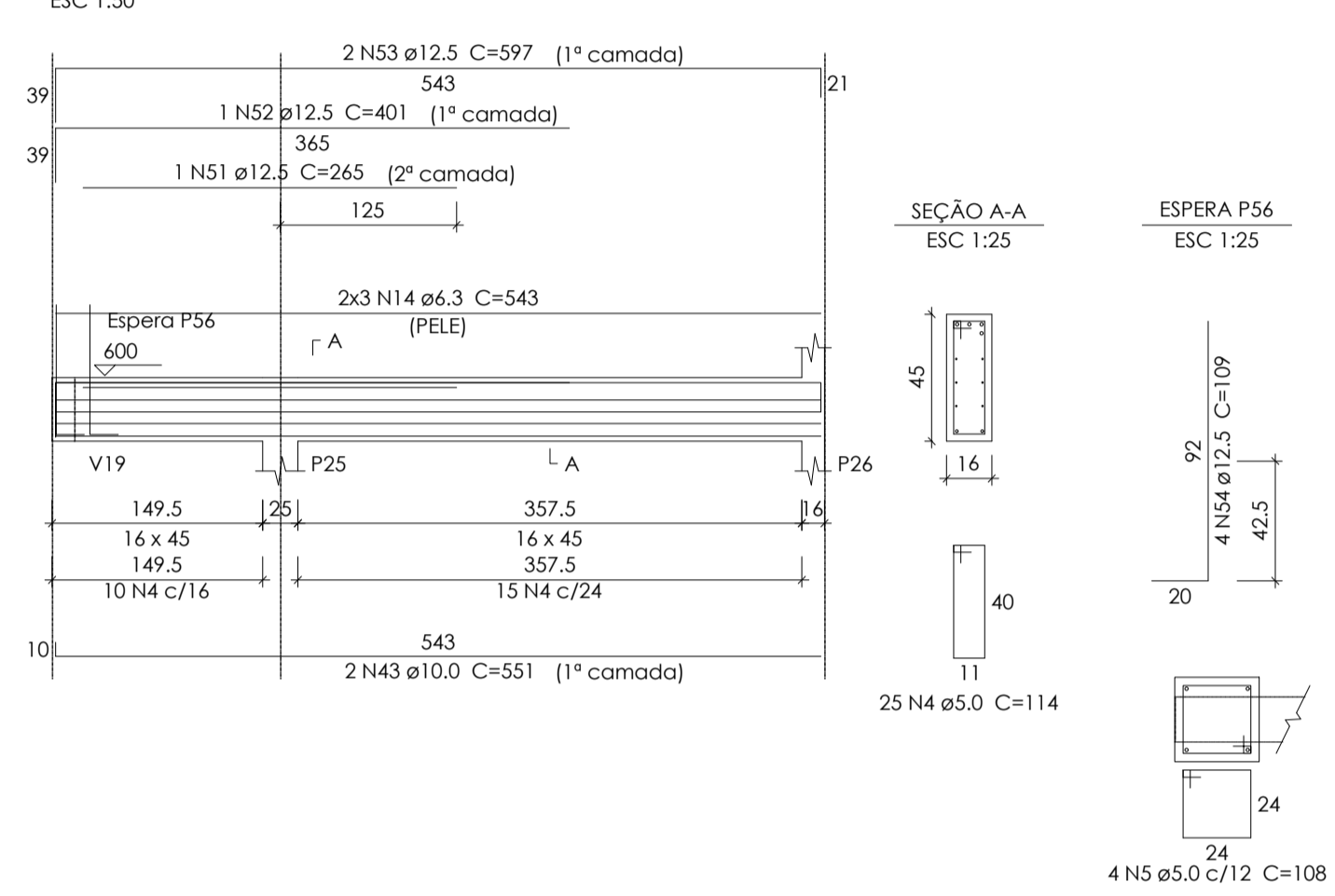
V6
ESC 1:50



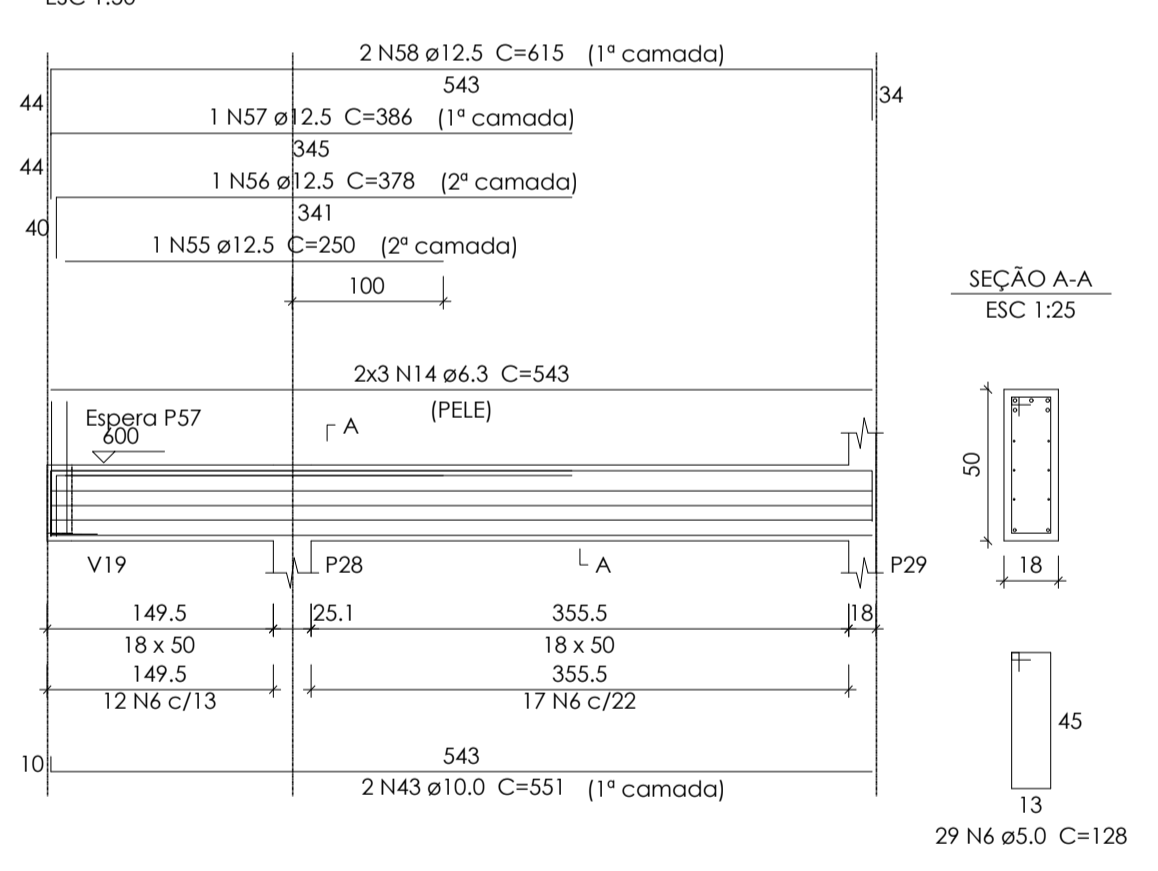
V7
ESC 1:50



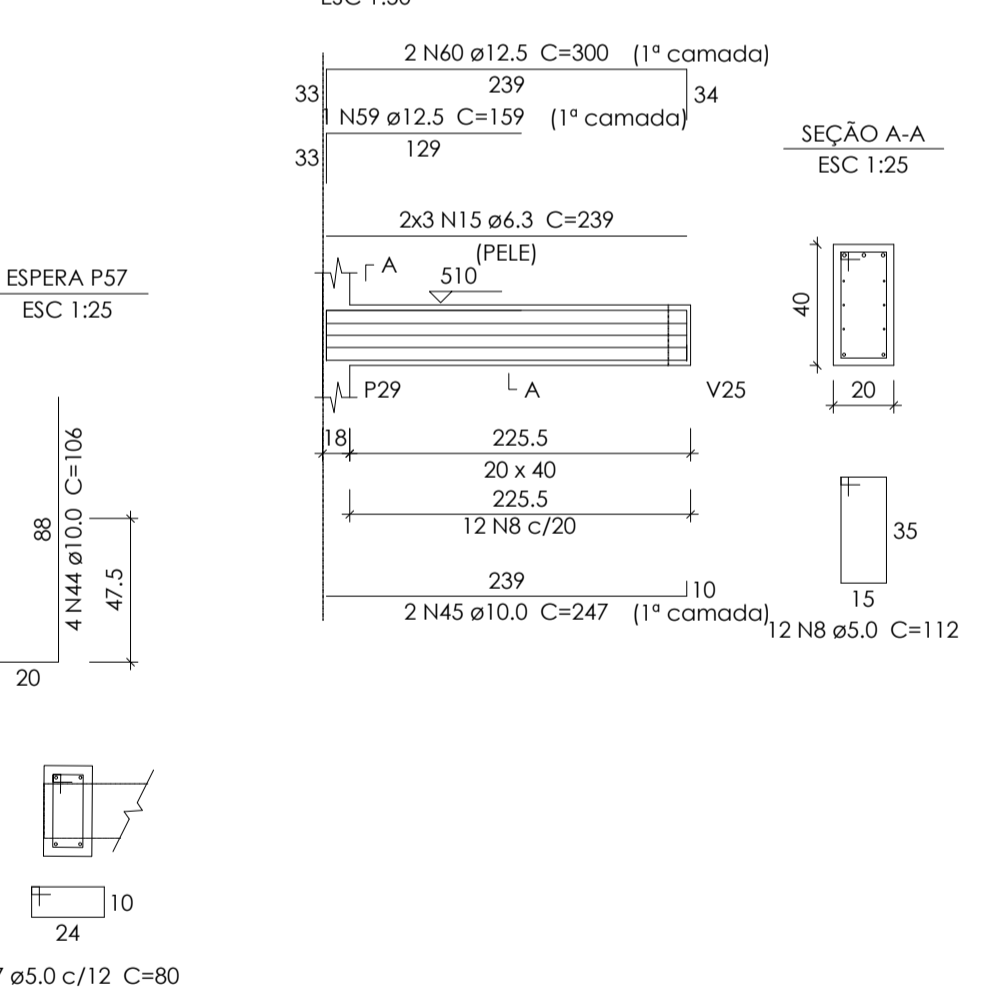
V8
ESC 1:50



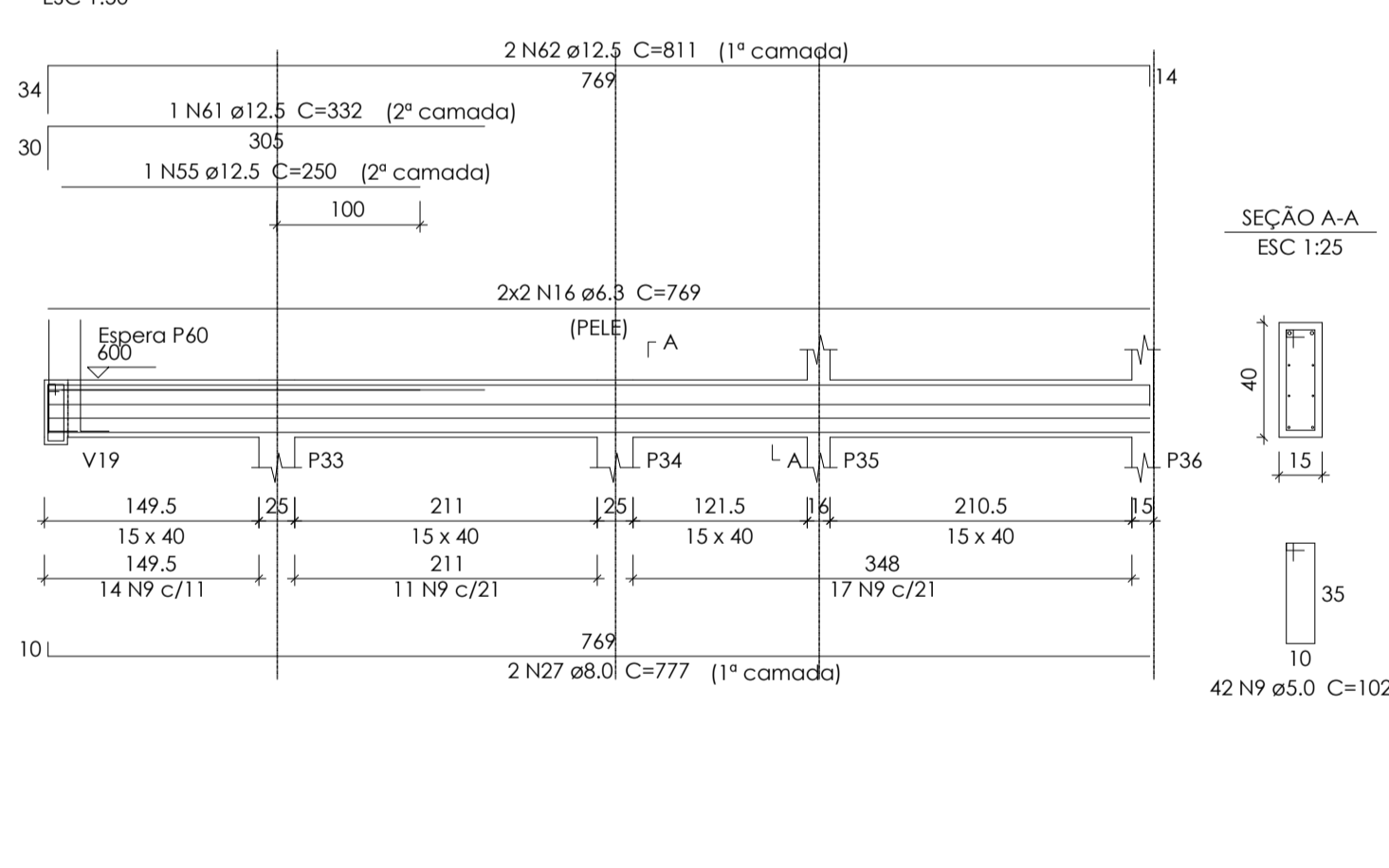
V9
ESC 1:50



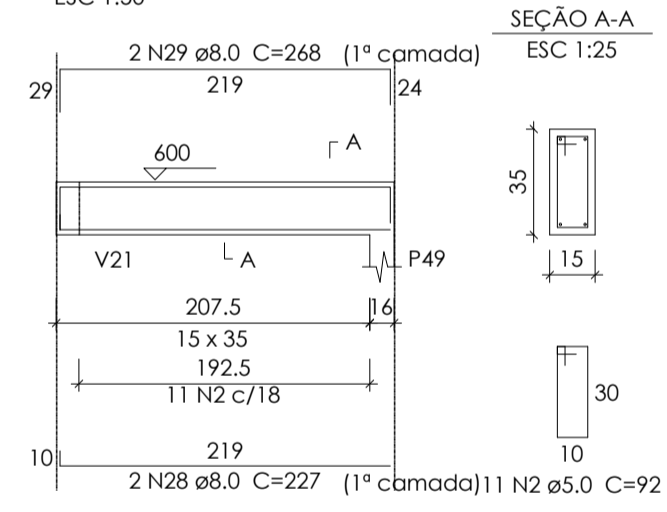
V10
ESC 1:50



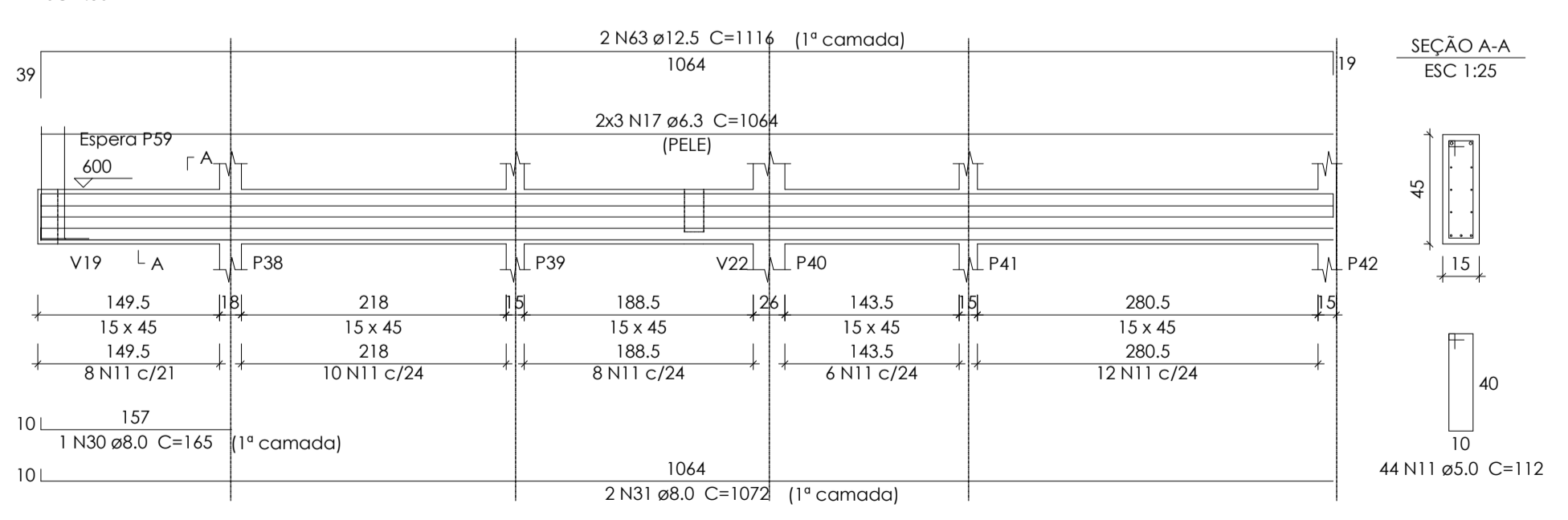
V11
ESC 1:50



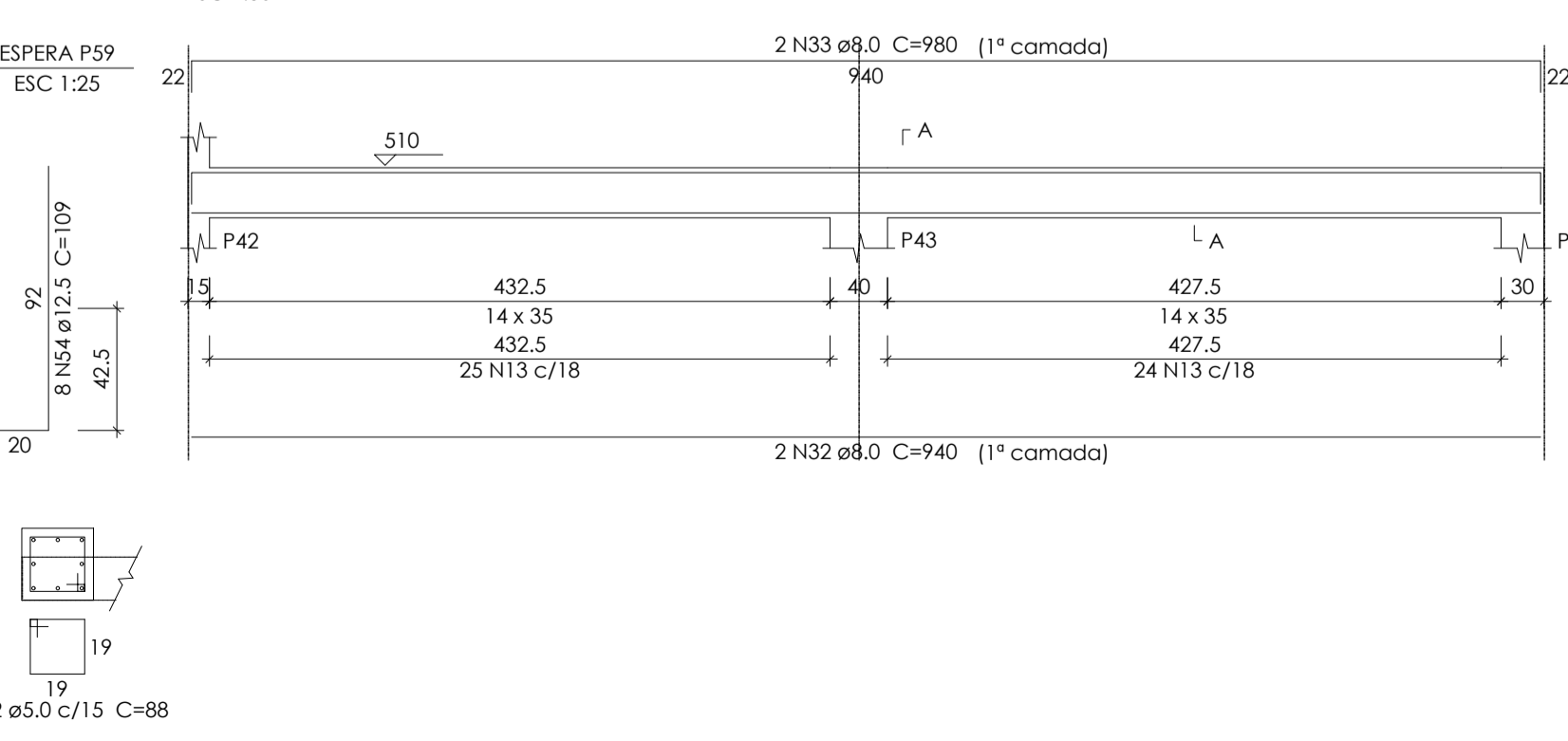
V15
ESC 1:50



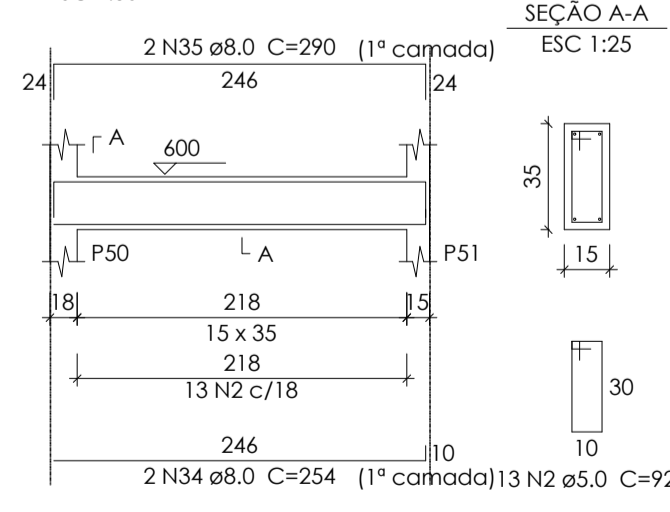
V12
ESC 1:50



V13
ESC 1:50



V16
ESC 1:50



Resumo do aço

CAÇO	DIAM	C.TOTAL (m)	PESO + 10% (kg)
CA50	4.3	206.7	55.6
	8.0	170.2	73.8
	10.0	103.8	70.3
	12.5	131.2	138.9
	5.0	434.7	73.7
PESO TOTAL			
CA50	338.8		
CA60	73.7		

Vol. de concreto total (C-25) = 5.17 m³
Área de forma total = 79.11 m²

Construção câmara de vereadores

Vigas pavimento laje 2

FOLHA: 19/30

DATA: 12/11/21

PROPRIETÁRIO(A):
MUNICÍPIO DE PORTO DOS GAÚCHOS

CPF / CNPJ:
03.204.187/0001-33

ENDEREÇO DO PROPRIETÁRIO(A):
Praça Leopoldina Wilke 19, Centro - Porto dos Gaúchos - MT

TELEFONE:
(66)3526-2000

TIPO DA OBRA:
Construção comercial em alvenaria, forro de gesso e cobertura isotérmica

ASSINATURAS:

AUTOR DO PROJ.:

Evelin Luani Montagna
Engenheira Civil
Crea-MT: 039125

RESP. TÉCNICO:

Evelin Luani Montagna
Engenheira Civil
Crea-MT: 039125

PROPRIETÁRIO(A):

Município de Porto dos Gaúchos
CNPJ: 03.204.187/0001-33